

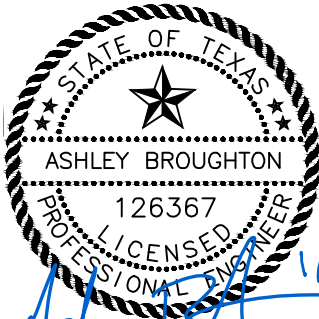
BID TABULATION FOR:

BID OPENING DATE:
BID OPENING LOCATION:
TABULATION BY:
TABULATION DATE:
LJA JOB NO.

CONSTRUCTION OF LAKESIDE BAYOU LIFT STATION NO. 1 - PHASE 1
TO SERVE GALVESTON COUNTY MUNICIPAL UTILITY DISTRICT NO. 53
GALVESTON COUNTY MUNICIPAL UTILITY DISTRICT NO. 53
CITY OF TEXAS CITY, GALVESTON COUNTY, TEXAS
JANUARY 12, 2024
LJA ENGINEERING, INC.
S. YOUNG
JANUARY 12, 2024
1367-2931 (9.2)

BIDDER'S NAME	TOTAL AMOUNT BID
1) 5J SERVICES, LLC	\$1,156,775.00
2) R & B GROUP, INC	\$1,245,251.00
3) PELTIER BROTHERS CONSTRUCTION	\$1,329,791.00

CALENDAR DAYS 335/365



I, ASHLEY BROUGHTON, P.E., hereby certify these bid tabulations to be true and correct.

BID TABULATION FOR:

BID OPENING DATE:
BID OPENING LOCATION:
TABULATION BY:
TABULATION DATE:
LJA JOB NO.

CONSTRUCTION OF LAKESIDE BAYOU LIFT STATION NO. 1 - PHASE 1
 TO SERVE GALVESTON COUNTY MUNICIPAL UTILITY DISTRICT NO. 53
 GALVESTON COUNTY MUNICIPAL UTILITY DISTRICT NO. 53
 CITY OF TEXAS CITY, GALVESTON COUNTY, TEXAS
 JANUARY 12, 2024
 LJA ENGINEERING, INC.
 S. YOUNG
 JANUARY 12, 2024
 1367-2931 (9.2)

				1) SJ SERVICES, LLC		2) R & B GROUP, INC		3) PELTIER BROTHERS CONSTRUCTION	
ITEM	DESCRIPTION	UNIT	QTY	UNIT COST	TOTAL COST	UNIT COST	TOTAL COST	UNIT COST	TOTAL COST
SANITARY LIFT STATION ITEMS									
1	SITE WORK, INCLUDING BUT NOT LIMITED TO SITE GRADING, HYDROMULCH SEEDING, SITE DRAINAGE, EQUIPMENT SLABS, TRANSFORMER PAD, CONCRETE PIPE SUPPORTS, COMPLETE IN PLACE	LS	1	\$10,000.00	\$10,000.00	\$10,000.00	\$10,000.00	\$10,000.00	\$10,000.00
2	12' DIAMETER CONCRETE WET WELL AND VALVE PAD, INCLUDING ACCESS HATCHES, VENT, STEPS AND ALL APPURTENANCES AS SHOWN ON PLANS, COMPLETE IN PLACE	LS	1	\$471,405.00	\$471,405.00	\$620,000.00	\$620,000.00	\$835,000.00	\$835,000.00
3	10 HP SUBMERSIBLE NON-CLOG PUMP WITH MINIMUM EFFICIENCY OF 60% AT 430 GPM AND 48' T.D.H., WITH ONE PUMP RUNING, INCLUDING DISCHARGE ELBOW, GUIDE RAILS, AND ALL APPURTENANCES, COMPLETE IN PLACE	EA	2	\$6,000.00	\$12,000.00	\$15,000.00	\$30,000.00	\$15,000.00	\$30,000.00
4	SANITARY LIFT STATION AND VALVE PAD PIPING, INCLUDING PIPE, VALVES, FITTINGS, SUPPORTS, AND ALL APPURTENANCES, COMPLETE IN PLACE	LS	1	\$110,000.00	\$110,000.00	\$90,000.00	\$90,000.00	\$75,000.00	\$75,000.00
5	15" ASTM D3034 SDR 26, SEWER PIPE, ALL DEPTHS, INCLUDING EXCAVATION, BACKFILL AND BEDDING, COMPLETE IN PLACE	LF	40	\$1,100.00	\$44,000.00	\$1,000.00	\$40,000.00	\$200.00	\$8,000.00
6	10" AWWA C900 DR 18, FORCE MAIN, ALL DEPTHS, INCLUDING FITTINGS, EXCAVATION, BACKFILL AND BEDDING, COMPLETE IN PLACE	LF	21	\$400.00	\$8,400.00	\$400.00	\$8,400.00	\$100.00	\$2,100.00
7	TRENCH SAFETY SYSTEM, ALL DEPTHS, COMPLETE IN PLACE	LF	61	\$10.00	\$610.00	\$1.00	\$61.00	\$1.00	\$61.00
8	1" SCHEDULE 40 PVC WATER LINE, ALL DEPTHS, INCLUDING FITTINGS, EXCAVATION, BACKFILL AND BEDDING, COMPLETE IN PLACE	LF	24	\$100.00	\$2,400.00	\$100.00	\$2,400.00	\$10.00	\$240.00
9	PROVIDE AND INSTALL REDUCED PRESSURE BACKFLOW PREVENTER, NON-FREEZE HOSE BIB, ALL NECESSARY APPURTENANCES, COMPLETE IN PLACE	LS	1	\$6,500.00	\$6,500.00	\$3,000.00	\$3,000.00	\$750.00	\$750.00
10	STANDARD SANITARY MANHOLE ALL DEPTHS INCLUDES EXCAVATION, BEDDING, BACKFILL, COMPLETE IN PLACE	EA	1	\$21,000.00	\$21,000.00	\$20,000.00	\$20,000.00	\$17,500.00	\$17,500.00
11	6" CRUSHED CONCRETE SITE COVER WITH GEOFABRIC (TENSAR TRIAX TX140 OR APPROVED EQUAL), COMPLETE IN PLACE	LF	742	\$50.00	\$37,100.00	\$40.00	\$29,680.00	\$40.00	\$29,680.00
12	6" REINFORCED CONCRETE PAVEMENT WITH 8" LIME OR CEMENT STABILIZED SUBGRADE EXTENDING 1' OUTSIDE PAVEMENT, COMPLETE IN PLACE	SY	276	\$75.00	\$20,700.00	\$100.00	\$27,600.00	\$100.00	\$27,600.00
13	8' TALL FENCECRETE MASONRY FENCE AND SHEET METAL SWING GATE TO BE CONSTRUCTED BY FENCECRETE, OWNER TO SELECT FENCE MATERIAL AND COLOR, COMPLETE IN PLACE	LF	385	\$175.00	\$67,375.00	\$170.00	\$65,450.00	\$175.00	\$67,375.00
14	4" PIPE BOLLARD, COMPLETE IN PLACE	EA	12	\$850.00	\$10,200.00	\$500.00	\$6,000.00	\$750.00	\$9,000.00
15	CONNECT PROPOSED SANITARY SEWER LINE TO PROPOSED SANITARY SEWER (BY OTHERS), INCLUDE ALL NECESSARY ADAPTORS AND CONNECTORS OR STUB OUT AND PLUG, COMPLETE IN PLACE	EA	1	\$1,500.00	\$1,500.00	\$1,000.00	\$1,000.00	\$50.00	\$50.00
16	CONNECT PROPOSED FORCE MAIN TO PROPOSED FORCE MAIN (BY OTHERS), INCLUDE ALL NECESSARY ADAPTORS AND CONNECTORS OR STUB OUT AND PLUG, COMPLETE IN PLACE	EA	1	\$1,500.00	\$1,500.00	\$1,000.00	\$1,000.00	\$50.00	\$50.00
17	ALLOWANCE FOR ELECTRIC SERVICE PROVIDER, EXACT AMOUNT WILL BE REIMBURSED TO CONTRACTOR UPON SUBMITTAL OF INVOICE FROM ELECTRIC SERVICE PROVIDER, COMPLETE IN PLACE	LS	1	\$20,000.00	\$20,000.00	\$20,000.00	\$20,000.00	\$20,000.00	\$20,000.00
18	NEW 400A 480V SERVICE WITH RACK, ALL DISCONNECTS, METERING PER UTILITY STANDARDS, CONDUIT, WIRE AND DUCT BANK FROM UTILITY TRANSFORMER TO METERING AND ATS, COMPLETE IN PLACE	LS	1	\$55,000.00	\$55,000.00	\$50,000.00	\$50,000.00	\$50,000.00	\$50,000.00

BID TABULATION FOR:

BID OPENING DATE:
BID OPENING LOCATION:
TABULATION BY:
TABULATION DATE:
LJA JOB NO.

CONSTRUCTION OF LAKESIDE BAYOU LIFT STATION NO. 1 - PHASE 1
 TO SERVE GALVESTON COUNTY MUNICIPAL UTILITY DISTRICT NO. 53
 GALVESTON COUNTY MUNICIPAL UTILITY DISTRICT NO. 53
 CITY OF TEXAS CITY, GALVESTON COUNTY, TEXAS
 JANUARY 12, 2024
 LJA ENGINEERING, INC.
 S. YOUNG
 JANUARY 12, 2024
 1367-2931 (9.2)

ITEM	DESCRIPTION	UNIT	QTY	1) SJ SERVICES, LLC		2) R & B GROUP, INC		3) PELTIER BROTHERS CONSTRUCTION	
				UNIT COST	TOTAL COST	UNIT COST	TOTAL COST	UNIT COST	TOTAL COST
19	NEW 150KW NATURAL GAS GENERATOR, 400A ATS AND CONDUIT, CABLE AND DUCT BANK FROM THE GENERATOR TO THE ATS, INCLUDING CONCRETE PAD, COMPLETE IN PLACE	LS	1	\$125,000.00	\$125,000.00	\$100,000.00	\$100,000.00	\$85,000.00	\$85,000.00
20	NEW LIFT STATION CONTROL PANEL WITH ALL BREAKERS, STARTERS, CONTROLS, WIRING, CONDUIT AND SCADA, INCLUDING CONCRETE PAD, COMPLETE IN PLACE	LS	1	\$120,000.00	\$120,000.00	\$100,000.00	\$100,000.00	\$50,000.00	\$50,000.00
SANITARY LIFT STATION ITEMS SUBTOTAL:					\$1,144,690.00		\$1,224,591.00		\$1,317,406.00
MISCELLANEOUS ITEMS									
1	STORM WATER POLLUTION PREVENTION PLAN, INCLUDING ADMINISTRATION, MAINTENANCE, AND REMOVAL AS REQUIRED BY THE PLANS AND AS DIRECTED BY THE ENGINEER, (TO BE MAINTAINED UNTIL CONTRACTOR'S NOTICE OF TERMINATION IS SUBMITTED), COMPLETE IN PLACE	LS	1	\$1,500.00	\$1,500.00	\$1,000.00	\$1,000.00	\$1,000.00	\$1,000.00
2	FILTER FABRIC FENCE, (TO BE USED ONLY AS DIRECTED BY THE ENGINEER), COMPLETE IN PLACE	LF	323	\$4.00	\$1,292.00	\$10.00	\$3,230.00	\$3.00	\$969.00
3	STABILIZED CONSTRUCTION ACCESS, INCLUDING INSTALLATION, MAINTENANCE AND REMOVAL, TO BE USED ONLY AS DIRECTED BY THE ENGINEER, COMPLETE IN PLACE	EA	1	\$1,000.00	\$1,000.00	\$1,000.00	\$1,000.00	\$1,000.00	\$1,000.00
4	INSTALLATION, MAINTENANCE AND REMOVAL OF CONCRETE TRUCK WASHOUT, COMPLETE IN PLACE	LS	1	\$1,000.00	\$1,000.00	\$1,000.00	\$1,000.00	\$500.00	\$500.00
5	DEWATERING FOR STRUCTURE, AS REQUIRED BY SOIL CONDITIONS, (TO BE USED ONLY AS DIRECTED BY THE ENGINEER), COMPLETE IN PLACE	LS	1	\$1.00	\$1.00	\$1,000.00	\$1,000.00	\$1,000.00	\$1,000.00
6	DEWATERING OF LINE WORK (TO BE USED ONLY AS DIRECTED BY THE ENGINEER), COMPLETE IN PLACE	LF	61	\$1.00	\$61.00	\$100.00	\$6,100.00	\$1.00	\$61.00
7	CONTROL OF SURFACE WATER (TO BE USED ONLY AS DIRECTED BY THE ENGINEER), COMPLETE IN PLACE	LS	1	\$1.00	\$1.00	\$100.00	\$100.00	\$625.00	\$625.00
8	EXTRA CEMENT STABILIZED SAND, (1.5 SACKS OF CEMENT PER CUBIC YARD CEMENT STABILIZED SAND), (TO BE USED ONLY AS DIRECTED BY THE ENGINEER), COMPLETE IN PLACE	CY	20	\$20.00	\$400.00	\$20.00	\$400.00	\$20.00	\$400.00
9	EXTRA 4,000 PSI CONCRETE WITH REINFORCING STEEL, (TO BE USED ONLY AS DIRECTED BY THE ENGINEER), COMPLETE IN PLACE	CY	10	\$500.00	\$5,000.00	\$500.00	\$5,000.00	\$500.00	\$5,000.00
10	EXTRA COST OF UTILITY WET SAND CONSTRUCTION, ALL LINE SIZES AND DEPTHS, (TO BE USED ONLY AS DIRECTED BY THE ENGINEER), COMPLETE IN PLACE	LF	61	\$30.00	\$1,830.00	\$30.00	\$1,830.00	\$30.00	\$1,830.00
MISCELLANEOUS ITEMS SUBTOTAL:					\$12,085.00		\$20,660.00		\$12,385.00
BIDDING SUMMARY									
SUBTOTAL SANITARY LIFT STATION ITEMS					\$1,144,690.00		\$1,224,591.00		\$1,317,406.00
SUBTOTAL MISCELLANEOUS ITEMS					\$12,085.00		\$20,660.00		\$12,385.00
TOTAL AMOUNT BASE BID					\$1,156,775.00		\$1,245,251.00		\$1,329,791.00